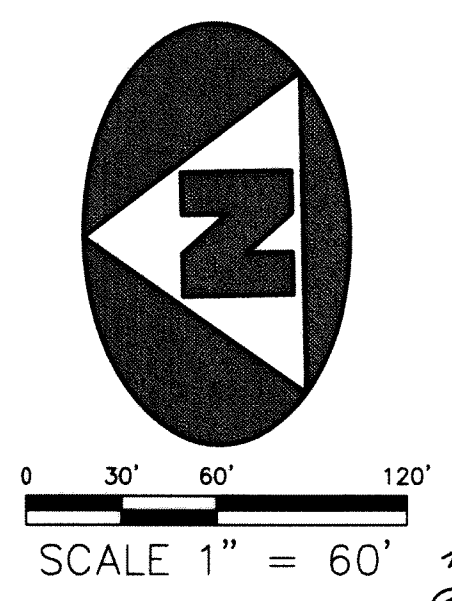


**ASSOCIATED LAND SURVEYORS, INC.**  
 801 NORTHPOINT PARKWAY, SUITE 35  
 WEST PALM BEACH, FL 33407  
 PHONE: (561) 848-2102 FAX: (561) 844-9659  
 LB NO. 7344 EMAIL: als@alssurvey.net

# EASTPOINTE COUNTRY CLUB PUD PLAT 15

BEING A REPLAT OF TRACTS "C", "E", AND THE WATER MANAGEMENT TRACT, TOGETHER WITH TRACT "B", OF PLAT NO. 14 EASTPOINTE SUBDIVISION, AS RECORDED IN PLAT BOOK 56, PAGE 29, PUBLIC RECORDS OF PALM BEACH COUNTY, FLORIDA; ALSO TOGETHER WITH A PORTION OF THE WATER MANAGEMENT TRACT AND GOLF COURSE, AS SHOWN ON PLAT NO. 12 EASTPOINTE SUBDIVISION, AS RECORDED IN PLAT BOOK 41, PAGE 168, SAID PUBLIC RECORDS; ALSO TOGETHER WITH A PORTION OF TRACT "H", PLAT NO. 14A EASTPOINTE SUBDIVISION, AS RECORDED IN PLAT BOOK 59, PAGE 136, SAID PUBLIC RECORDS; LYING IN SECTION 27, TOWNSHIP 41 SOUTH, RANGE 42 EAST, PALM BEACH COUNTY, FLORIDA



**LEGEND**

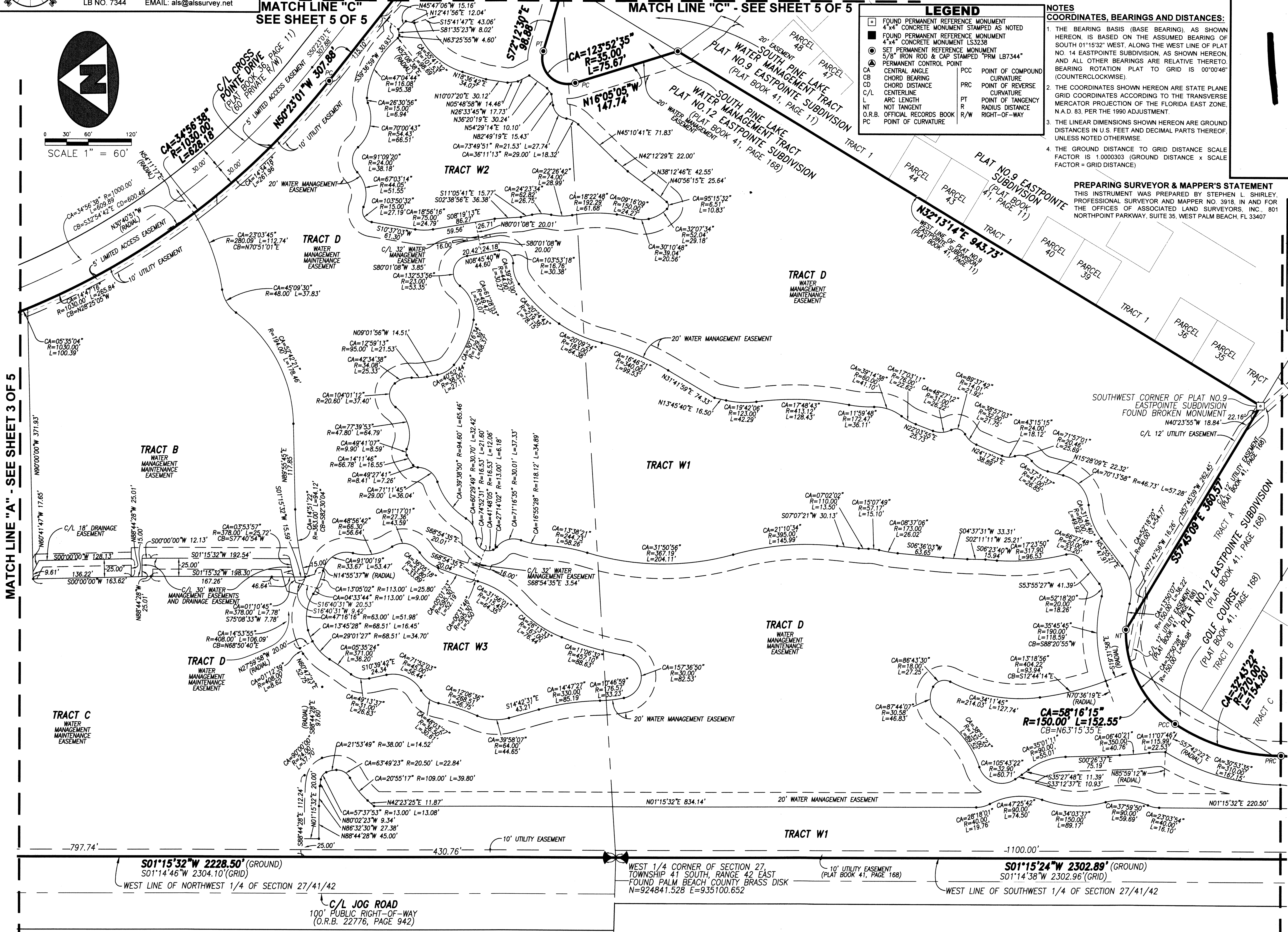
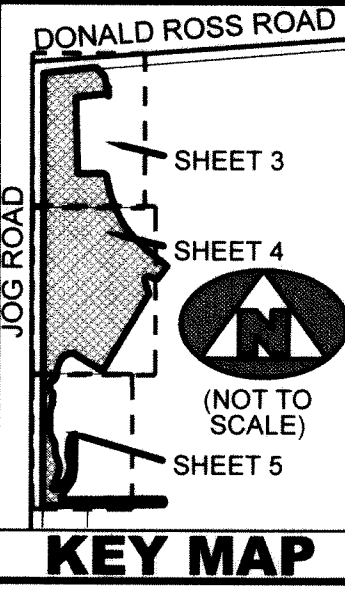
○	FOUND PERMANENT REFERENCE MONUMENT	○	POINT OF COMPOUND CURVATURE
■	4" x 4" CONCRETE MONUMENT STAMPED AS NOTED	○	POINT OF REVERSE CURVATURE
■	FOUND PERMANENT REFERENCE MONUMENT	○	POINT OF TANGENCY
○	4" x 4" CONCRETE MONUMENT LS3338	○	RADIUS DISTANCE
○	SET PERMANENT REFERENCE MONUMENT	○	RIGHT-OF-WAY
○	5/8" IRON ROD & CAP STAMPED "PRM LB7344"		
○	PERMANENT CONTROL POINT		
○	CENTRAL ANGLE		
○	CHORD BEARING		
○	CHORD DISTANCE		
○	CENTERLINE		
○	ARC LENGTH		
○	ARC LENGTH		
○	NOT TANGENT		
○	O.R.B. OFFICIAL RECORDS BOOK		
○	POINT OF CURVATURE		

**NOTES**

**COORDINATES, BEARINGS AND DISTANCES:**

- THE BEARING BASIS (BASE BEARING), AS SHOWN HEREON, IS BASED ON THE ASSUMED BEARING OF SOUTH 01°15'32" WEST, ALONG THE WEST LINE OF PLAT NO. 14 EASTPOINTE SUBDIVISION, AS SHOWN HEREON, AND ALL OTHER BEARINGS ARE RELATIVE THERETO. BEARING ROTATION PLAT TO GRID IS 00°00'46" (COUNTERCLOCKWISE).
- THE COORDINATES SHOWN HEREON ARE STATE PLANE GRID COORDINATES ACCORDING TO THE TRANSVERSE MERCATOR PROJECTION OF THE FLORIDA EAST ZONE, N.A.D. 83, PER THE 1990 ADJUSTMENT.
- THE LINEAR DIMENSIONS SHOWN HEREON ARE GROUND DISTANCES IN U.S. FEET AND DECIMAL PARTS THEREOF, UNLESS NOTED OTHERWISE.
- THE GROUND DISTANCE TO GRID DISTANCE SCALE FACTOR IS 1.0000303 (GROUND DISTANCE x SCALE FACTOR = GRID DISTANCE)

**PREPARING SURVEYOR & MAPPER'S STATEMENT**  
 THIS INSTRUMENT WAS PREPARED BY STEPHEN L. SHIRLEY, PROFESSIONAL SURVEYOR AND MAPPER NO. 3918, IN AND FOR THE OFFICES OF ASSOCIATED LAND SURVEYORS, INC., 801 NORTHPOINT PARKWAY, SUITE 35, WEST PALM BEACH, FL 33407



12